

GEIS – HD General Exam Camera



The Visionflex GEIS Camera (General Exam Imaging System) provides exceptional quality images & video in Full HD 1080p resolution and brings telemedicine imagery to a whole new level. The GEIS allows the operator to use the camera with automatic or manual focus thereby providing clear and crisp images every time.

Accessories include a tongue depressor attachment for images of the oral cavity and a dermatology hood for exceptional close-up images of the skin. The General Exam Camera can be used in a wide range of applications where clear, precise & high quality images are essential.

Features & Benefits

- **Lightweight, Ergonomic Design**
- **Full HD 1080p Resolution**
- **High Intensity LED Illumination**
- **Adjustable LED Brightness with 4 steps**
- **Auto or Manual Focus for sharp images**
- **Single Button Snapshot**
- **Teleconferencing ready**
- **No drivers required for USB2 Interface (UVC output)**



FULL DEFINITION HIGH QUALITY

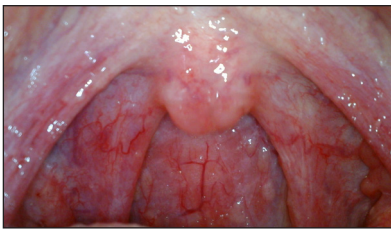
Introducing GIES



The GEIS hand held camera produces beautiful (16:9) full HD images which can be viewed on the Visionflex ProEX or any PC/Mac through a standard USB2 interface. The GEIS camera is also the only camera worldwide with integrated patient electrical isolation to meet the most stringent electrical safety tests. Connectivity is simplified with UVC (Universal Video Class) USB connectivity. No more software drivers!

Together with the Visionflex ProEX Telehealth Hub, the GEIS General Examination Camera enables healthcare professionals to assess a patient from any remote location. This multi-purpose examination camera was developed specifically for Telehealth applications to capture and display full HD video and images of a patient encounter. With its light weight, ergonomic design and 5 control buttons, the GEIS offers auto or manual focus, LED illumination control and image capture all in one small, single-hand operated camera.

The GEIS Camera comes with a snap on tongue depressor to enable effective and patient friendly examinations of the oral cavity. The adaptor is compatible with most standard tongue depressors and is ideal for use with children.



The GEIS Camera comes with a snap on dermatology hood to provide clear and evenly illuminated images of the skin. The hood can be snapped onto the GEIS camera and controls the illumination to the skin by blocking out any unwanted light.



SPECIFICATIONS

Resolution	Full HD 1080p, 1920x1080
Focus control and range	Automatic or Manual: 4cm to infinity
Exposure control	Automatic AGC
Interface	USB 2.0 Standard Type A Connector (Electrically Isolated)
Operating buttons	Capture, Focus (+ & -), LED Brightness 4 steps (high to off)
Size & Weight	136 x 36 x 32mm, 75g (without cable)